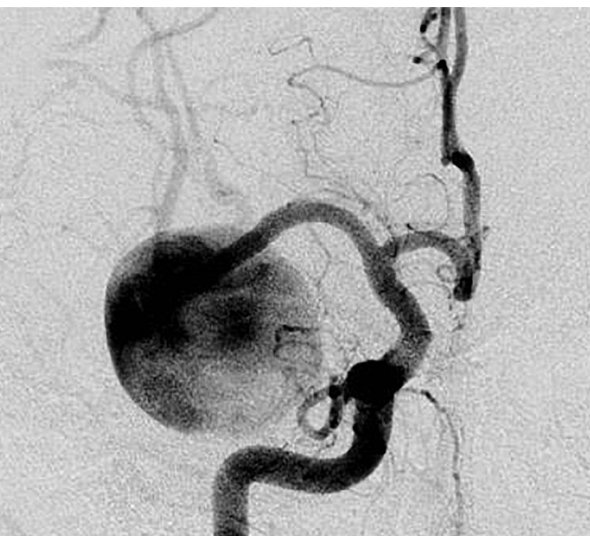


1st Annual Lawton-Tanikawa
West-East Vascular Neurosurgery Course:
“The Last Samurai”



March 12-13, 2020

Phoenix, Arizona

For more information:

www.barrowneuro.org/education/find-a-conference-or-cme-course/

Course Description

Barrow Neurological Institute 1st Annual Lawton – Tanikawa Vascular Neurosurgery Course

March 12-13, 2020

The Barrow Neurological Institute announces the 1st Annual Lawton-Tanikawa/ West-East Vascular Neurosurgery Course, led by course directors Michael Lawton and Rokuya Tanikawa. This didactic and practical course in neurosurgical approaches and vascular anatomy will focus on complex cerebrovascular pathology and advanced surgical techniques such as bypass. The hands-on laboratory exercises will cover anterior and lateral regions of the brain and skull base. This course is designed for neurosurgery residents, fellows, and vascular neurosurgeons. Beyond the surgical anatomy and approaches, this course will highlight the strategic thinking of two of the most experienced vascular neurosurgeons in practice today. This full 2-day course is designed for intense instruction among 24 participants. Features include 3D microanatomical videos and 3D operative videos of cerebrovascular and tumor pathology to make the cadaver dissections come alive, using preserved cadavers with vascular injection. Each station will have state-of-the-art instrumentation and microscopes, with masters at the head station to demonstrate.

Objectives

- Become familiar with microneurosurgical anatomy of the anterior and lateral regions of cranial and skull base
- Learn appropriate visualization, technique, and approaches to the skull base
- Correlate clinical pathological information with the corresponding anatomic region
- Combine anatomy and pathology information into decision-making for approach selection
- Explore and discuss options from experienced neurosurgical faculty for surgical treatment of vascular pathology
- Gain hands-on practice with these surgical approaches utilizing injected cadaver specimens

BNI Neurosurgery Research Laboratory Marian Rochelle Neuroscience Research Center Building

The course takes place at The Loyal & Edith Davis Neurosurgical Research Laboratory of the Barrow Neurological Institute Division of Neurological Surgery which is a world-class education, training, and research facility with a specialization in neurosurgical anatomy and practical surgical courses. The facility is renowned for exquisite cadaver tissue specimens and features independent surgical stations fully equipped with operating microscopes, suction, irrigation, standard head frames, microsurgical and power instrumentation, 3D surgical projection, high definition flat screens, and fully-trained attendant neurosurgery research staff.



General Information

- **Course Location**

The Loyal & Edith Davis Neurosurgical Research Laboratory
Barrow Neurological Institute
St. Joseph's Hospital and Medical Center
350 West Thomas Road, Phoenix, AZ 85013

- **Laboratory Contact Information**

Neurosurgery Research Department: 602-406-3268
St. Joseph's Hospital and Medical Center Main: 602-406-3000
Fax: 602-406-4153
Email: William.Bichard@DignityHealth.org or
Judith.Chavira@DignityHealth.org

- **Approved Accommodations:**

**Embassy Suites by Hilton
Phoenix Downtown North**
10 East Thomas Road, Phoenix, AZ 85012
602-222-1111
3 blocks from the lab.
Hotel shuttle runs between 7:00am – 10:45pm.

Hampton Inn Phoenix-Midtown-Downtown Area
160 W. Catalina Drive, Phoenix, AZ 85013
602-200-0990
Across the street from the lab. Walking distance.
No hotel shuttle service.

Fairfield Inn and Suits Phoenix (Marriott)
2520 North Central Avenue
602-716-9900
0.6 miles from the lab.
Hotel shuttle runs between 6:00am – 10:00pm.

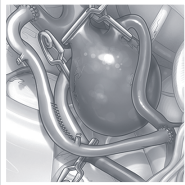
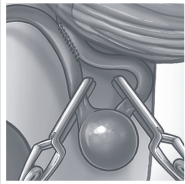
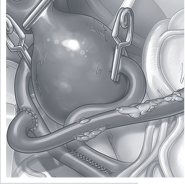
Wyndham Garden Phoenix | Ramada Phoenix
2nd Ave. and Osborn
Wyndhamhotels.com
602-604-4900 Wyndham Garden
602-595-4444 Ramada Phoenix

- **Taxi Contacts:**

AAA Yellow Cab:
602-252-5252

Discount Cab:
602-200-2000

Execucar:
800-410-4444



Thursday, March 12

7:00 AM **Arrival and Registration** | *Breakfast*

Orbitozygomatic Approach

7:45 AM Anatomy of Orbit & Pterion | *Almefty*

8:15 AM Technique: Basic Pterional Craniotomy | *Tanikawa*

8:45 AM Clinical Applications | *Lawton*

9:15 AM **Lab Dissection:**
OZ Approaches | *All*

12:00 Noon **Lunch**

Cavernous Sinus and Middle Fossa Approaches

12:45 PM Anatomy of Cavernous Sinus and Middle Fossa | *Benet*

1:15 PM Technique: Transcavernous Approach | *Tanikawa*

2:00 PM Clinical Applications | *Lawton*

2:30 PM **Lab Dissection:**
Cavernous Sinus, Middle Fossa Approach and Anterior Petrosectomy | *All*

5:00 PM **Adjourn**

2020 Schedule

Friday, March 13

7:00 AM ***Breakfast***

7:15 AM Barrow Neurosurgery Conference

8:30 AM Grand Rounds | *Tanikawa*

9:30 AM Technique: Transpetrous Approaches | *Benet*

10:00 AM **Lab Dissection:**
Transpetrous Approaches | *All*

12:00 Noon ***Lunch***

Far Lateral Approach

12:45 PM Anatomy of Foramen Magnum and Jugular Foramen | *Lawton*

1:15 PM Technique: Posterior Circulation Bypass | *Tanikawa*

1:45 PM **Lab Dissection:**
Far Lateral Approach | *All*

4:30 PM ***Adjourn***

For more information:

cme@barrowneuro.org
(602) 406-3067

Course Directors

Michael T. Lawton, MD

President & CEO
Professor & Chair, Department of Neurological Surgery
Robert F. Spetzler Endowed Chair in Neurosciences
Chief, Division of Neurovascular Surgery
Barrow Neurological Institute | Phoenix, Arizona

Rokuya Tanikawa, MD

Senior Vice President
Director, Stroke Center
Department of Neurosurgery
Sapporo Teishinkai Hospital | Sapporo, Japan

Laboratory Director

Mark C. Preul, MD

Newsome Family Endowed Chair of Neurosurgery Research
Director, Neurosurgery Research
Division of Neurological Surgery
Barrow Neurological Institute | Phoenix, Arizona

Course Coordinator

William Bichard

Clinical Coordinator
Barrow Neurological Institute | Phoenix, Arizona

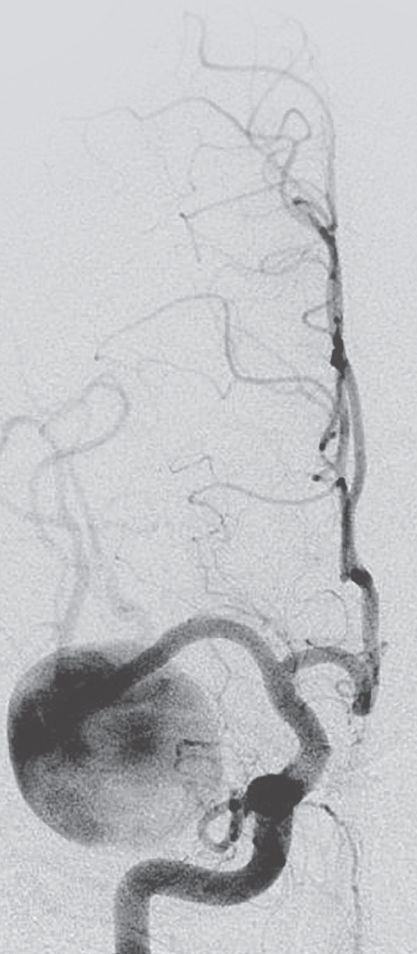
Additional Faculty

Kaith Almefty, MD

Division of Neurological Surgery
Barrow Neurological Institute

Arnau Benet, MD

Neurosurgery Resident
Barrow Neurological Institute



1st Annual Lawton – Tanikawa Vascular Neurosurgery Course: “The Last Samurai”

Barrow Neurological Institute

Residents/Fellows: \$200

Non-trainee: \$2500*

REGISTER NOW

[BarrowNeuro.org/Lawton-Tanikawa SkullBase](http://BarrowNeuro.org/Lawton-Tanikawa_SkullBase)

For more information, please contact the
Barrow Continuing Medical Education Office at
CME@BarrowNeuro.org or 602-406-3067.

Refunds:

To insure adequate spaces and planning for the course,
no refunds are given for canceled registrations.



Nonprofit Org.
U.S. Postage
PAID
Permit No. 685
Phoenix, Arizona

350 W. Thomas Rd.
Phoenix, AZ 85013

March 12-13, 2020
Phoenix, Arizona

**1st Annual Lawton-Tanikawa
West-East Vascular Neurosurgery
Course: “The Last Samurai”**

Barrow Neurological Institute



Course Co-Directors

Michael T. Lawton, MD
President & CEO
Professor & Chair, Department of Neurological Surgery
Robert F. Spetzler Endowed Chair in Neurosciences
Chief, Division of Neurovascular Surgery
Barrow Neurological Institute, Phoenix, Arizona

Rokuya Tanikawa, MD
Senior Vice President, Director
Department of Neurosurgery, Stroke Center
Sapporo Teishinkai Hospital, Sapporo, Japan

